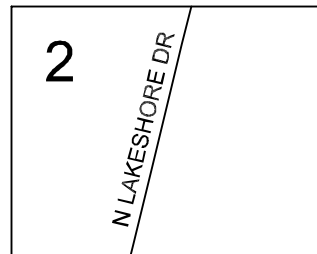
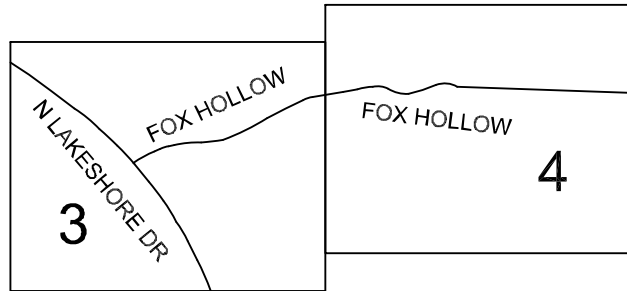
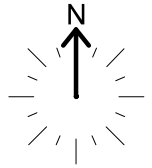


LEGEND:

- ✱ POWER POLE
- ☐ BORE POPUP
- ▭ PROPOSED VAULT
- ☒ PEDESTAL
- ⤴ ANCHOR AND GUY
- BF—BF— BURIED FIBER
- AERIAL FIBER
- - - - - RIGHT OF WAY
- EDGE OF PAVEMENT/GRAVEL
- · - · - · CENTER LINE
- ⤴————> OVERHEAD GUY



VICINITY MAP

AT&T

PROPOSED FIBER OPTIC CABLE
FACILITIES IN THE RIGHT
OF WAY OF CITY OF CADDO PARISH
LOUISIANA

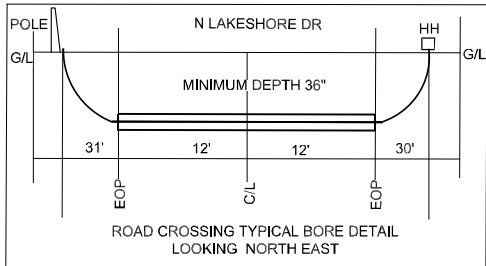
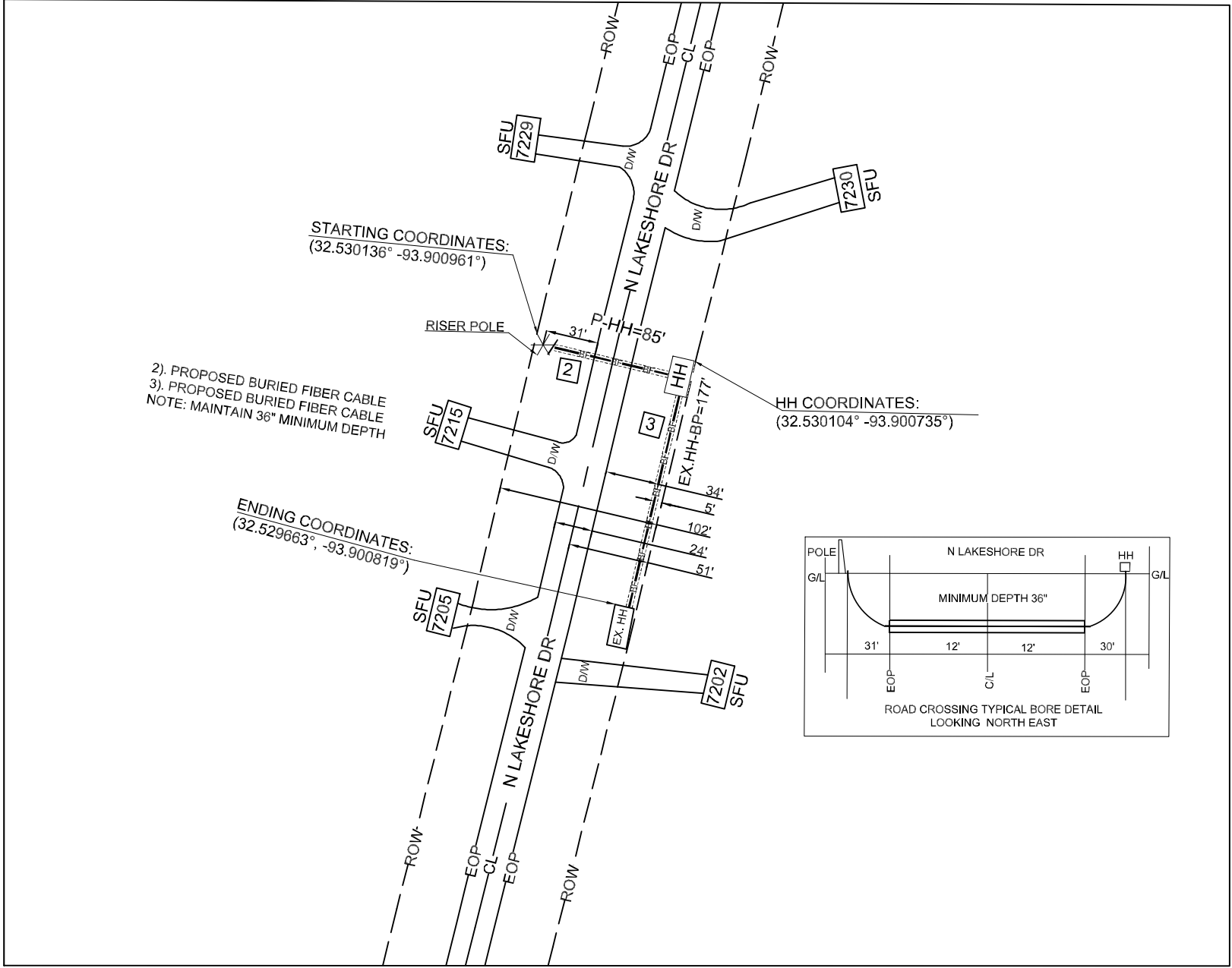
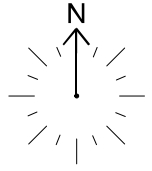
Exchange: BLNCLAMA

Designer: NEAL, TIMOTHY

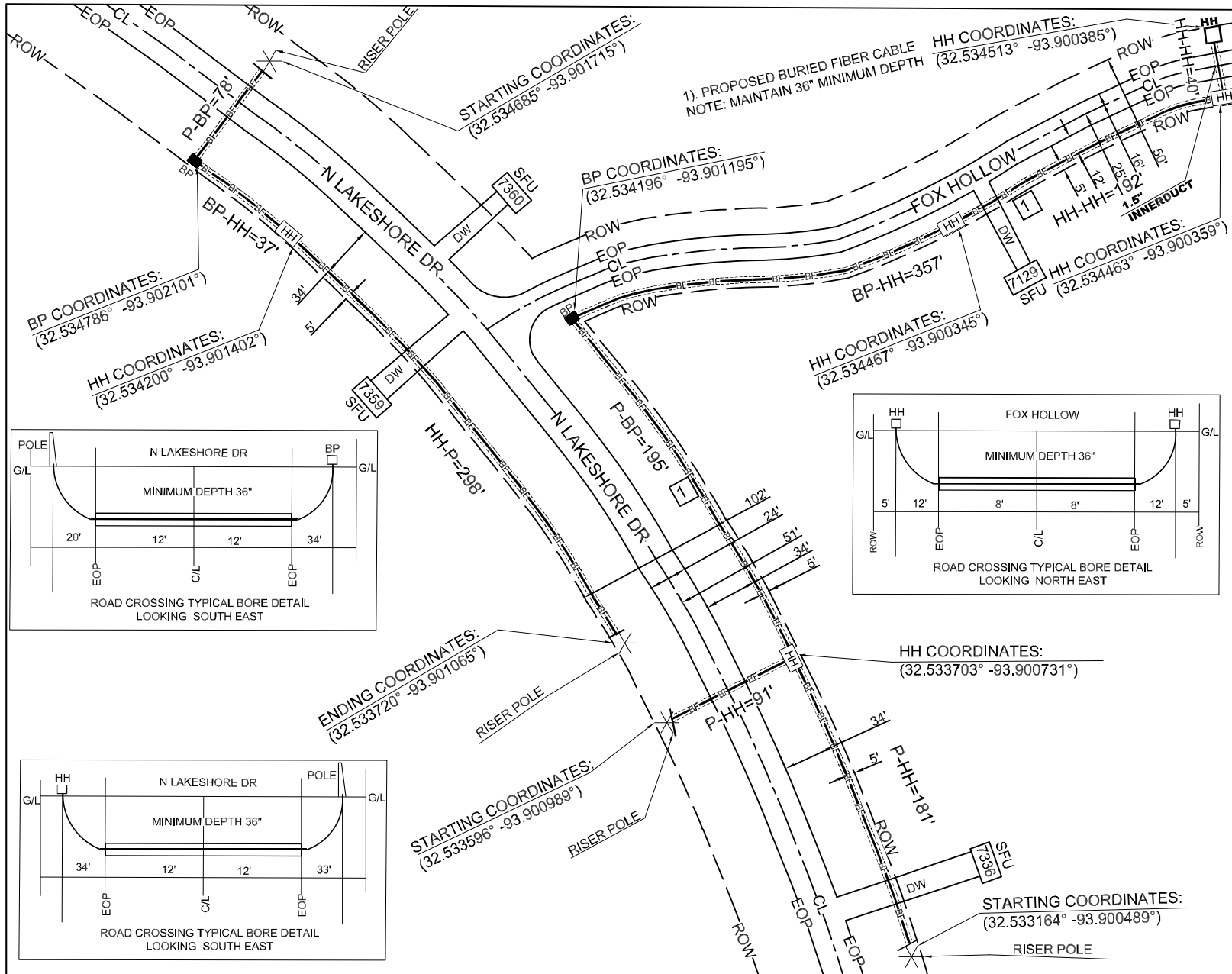
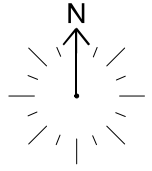
Phone: 6016938801

Authorization: A058P3J/A058P3K

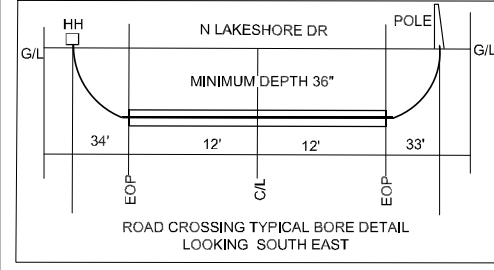
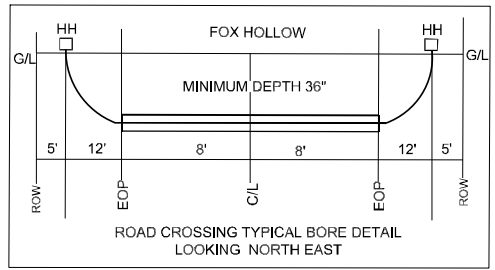
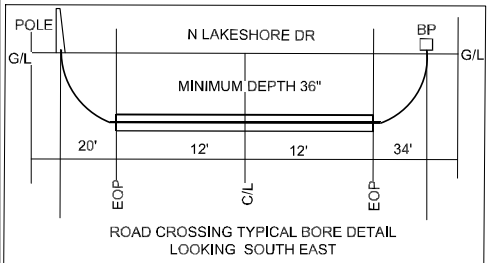
Dwg. 1 of 4



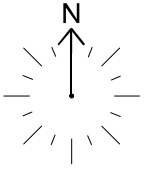
<h1>ATT</h1>	
PROPOSED FIBER OPTIC CABLE FACILITIES IN THE RIGHT OF WAY OF CITY OF CADDO PARISH LOUISIANA	
Exchange:	BLNCLAMA
Designer:	NEAL,TIMOTHY
Phone:	6016938801
Authorization:	A058P3J/A058P3K
Dwg.	2 of 4



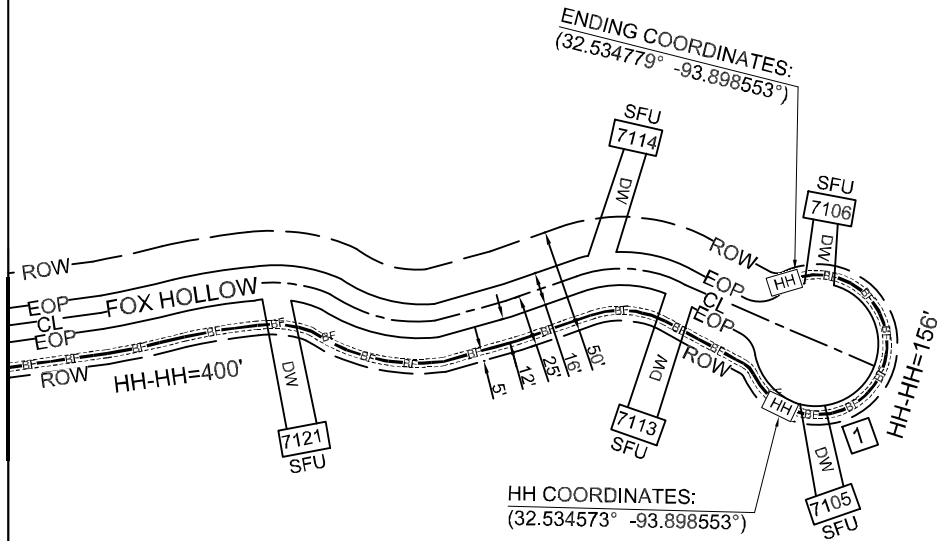
TO PRINT 4



<h1>ATT</h1>	
PROPOSED FIBER OPTIC CABLE FACILITIES IN THE RIGHT OF WAY OF CITY OF CADDO PARISH LOUISIANA	
Exchange:	BLNCLAMA
Designer:	NEAL,TIMOTHY
Phone:	6016938801
Authorization:	A058P3J/A058P3K
Dwg.	3 of 4



TO PRINT 3



1). PROPOSED BURIED FIBER CABLE
NOTE: MAINTAIN 36" MINIMUM DEPTH

ATT

PROPOSED FIBER OPTIC CABLE
FACILITIES IN THE RIGHT
OF WAY OF CITY OF CADDO PARISH
LOUISIANA

Exchange: BLNCLAMA

Designer: NEAL,TIMOTHY

Phone: 6016938801

Authorization: A058P3J/A058P3K

Dwg. 4 of 4