

GRADING PLAN LEGEND

- PROPERTY BOUNDARY LINE
- - - LIMITS OF DISTURBANCE BOUNDARY
- EXISTING MAJOR CONTOUR WITH LABEL
- EXISTING MINOR CONTOUR WITH LABEL
- PROPOSED MAJOR CONTOUR WITH LABEL
- PROPOSED MINOR CONTOUR WITH LABEL
- PROPOSED SLOPE
- SPOT ELEVATION (SEE ELEVATION SPOT LEGEND)
- 3:1 MAX
- 4" MATERIAL
- STORM PIPE WITH FLOW DIRECTION
- STORM MANHOLE
- RIP RAP (SEE TO SHEET C-120.21 FOR CALCS)
- STORM CURB INLET
- TRENCH DRAIN
- STORM CATCH BASIN
- DRAIN COVER (CONTRACTOR TO PROVIDE AS PART OF SPILL KITS FOR ALL INLETS RECEIVING RUNOFF FROM FUEL FILL AREAS)
- OVERLAND RELIEF PATH
- ADA ACCESSIBLE ROUTE
- CHANNEL (REFER TO C-120.00 FOR CHANNEL LINING & COMPUTATIONS)
- TRANSITION GUTTER
- SPILL GUTTER
- TRANSITION CURB
- STEEP SLOPES (GREATER THAN 3:1) INSTALL SLOPE STABILIZATION (SS) MEASURES USING ROLLED EROSION CONTROL PRODUCTS (RECP) OR APPROVED EQUAL

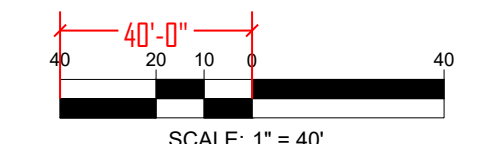
Construction
Entrance Culverts

TOTAL SUBSTATION AREA
±±15.2 AC AC

MATCHLINE - SHEET C-070.05

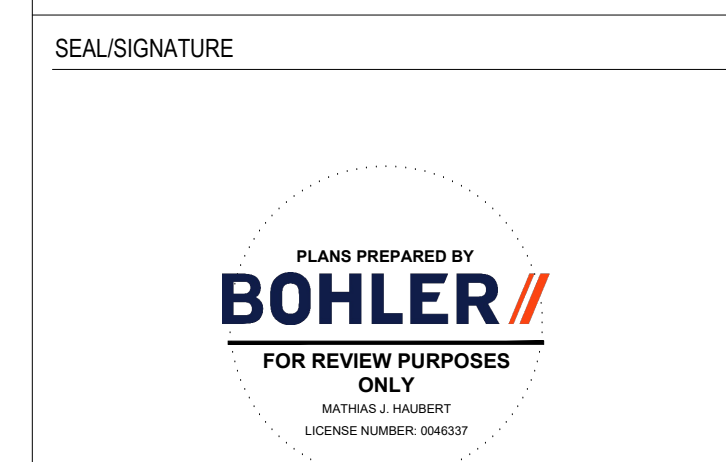
MATCHLINE - SHEET C-070.07

THIS PLAN TO BE UTILIZED
FOR SITE GRADING
PURPOSES ONLY



PROJECT ADDRESS
STATELINE TECHNOLOGY PARK
STATELINE ROAD
WEST HALF OF SECTION 29 & SECTION 30

PROJECT DELIVERY PACKAGE
100% DRAFT SITE PLANS



LEGAL NOTICE
THIS INFORMATION IS VOLUNTARILY SUBMITTED TO A PUBLIC OFFICE IN EXPECTATION OF PROTECTION FROM DISCLOSURE

ISSUE DATE: 18 MAY 2026	PROJECT NO: TXA250064.00		
DRWG: BD / LC	CHKAPP: BD / MH		
REV	DATE	DESCRIPTION	DRN (ENG) CHK APP

CONFIDENTIAL
ANY UNAUTHORIZED USE OR REPRODUCTION OF THIS DOCUMENT IN WHOLE OR IN PART IS PROHIBITED. DELETE THIS DOCUMENT IF YOU HAVE RECEIVED IT IN ERROR

MECHANICAL ENGINEER: PAE DAVE WILLIAMS 503.226.2921 151 SW 1ST AVENUE SUITE 300 PORTLAND, OR 97204	ELECTRICAL ENGINEER: PAE MICHAEL YEE 503.226.2921 151 SW 1ST AVENUE SUITE 300 PORTLAND, OR 97204
---	---

CIVIL ENGINEER: BOHLER MATTHIAS HAMBERT, P.E. 469.488.7200 2600 NETWORK BOULEVARD SUITE 310 FRIEDRICH, TX 76044	STRUCTURAL ENGINEER: HKS ARCHITECTS, P.C. MICHAEL USK 214.969.5599 300 N SAINT PAUL ST. #100 DALLAS, TEXAS 75201
---	--

ARCHITECT: HKS ARCHITECTS, P.C. DAVE WILLIAMS 312.863.7897 125 CLARK ST #1100 CHICAGO, IL 60603	SOIL PROTECTION ENGINEER: PAE DAVE WILLIAMS 503.226.2921 151 SW 1ST AVENUE SUITE 300 PORTLAND, OR 97204
---	--

ACOUSTIC ENGINEER: RAMBOLL JEFF SCHWANKS, P.E., INCE BD CERT 913.533.2036 108 MAINTR BLDG, SUITE 100 OVERLAND PARK, KS 66210	GEOTECH ENGINEER: ECS SOUTHEAST, LLC JOE COBURN 225.224.2583 11211 INDUSTRIAL BLVD, SUITE 300 BATON ROUGE, LA 70847
--	---

PROJECT: STATELINE TECHNOLOGY PARK
TITLE: **SITE GRADING AND DRAINAGE PLAN D**
SHEET NO: **C-070.04**
FILE NO: TXA250064.00
PAPER SIZE: ARCH E1 SCALE: AS NOTED REV: 0

PDF PRINT DATE: 1/22/2026 11:50:06 AM BASED ON THE LATEST VERSION: 000_241110.DWG