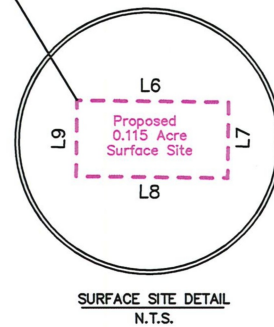
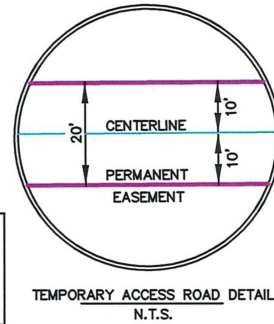
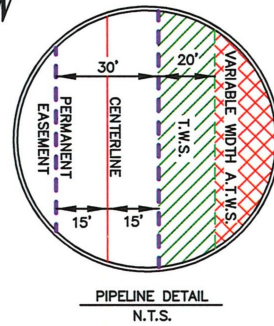


SECTIONS 2 & 11, T15N-R14W DESOTO PARISH, LOUISIANA



GRAPHIC SCALE 1"=200'



Existing Well Pad
Chesapeake Operating
Hervey 2-15-14

B.O.E.
N: 661826.39
E: 2889437.53
LAT: 32.3130857
LON: 93.7669314

P.O.B.
N: 661048.22
E: 2889402.73
LAT: 32.3109457
LON: 93.7670146

LINE	BEARING	DISTANCE
L1	N 90°00'00" E	15.00'
L2	S 00°00'00" E	778.81'
L3	N 89°11'51" W	564.97'
L4	S 88°02'09" W	100.59'
L5	N 89°15'51" W	269.14'
L6	S 89°15'51" E	100.00'
L7	S 00°44'09" W	50.00'
L8	N 89°15'51" W	100.00'
L9	N 00°44'09" E	50.00'

HERVEY FAMILY, LTD
S/2 of Sect. 2 - T 15 N - R 14 W
L&E 100ac and L&E 0.51ac
File #657887

40' Permanent Easement
Regency Field Services LLC
File 656623

25' Permanent Easement
Wildcat Midstream Caddo LLC
File 719415

See Surface Site Detail

Existing Foreign Pipelines

E.O.E.
N: 661047.58
E: 2889452.53
LAT: 32.3109455
LON: 93.7668534

E.O.E. ACCESS ROAD
N: 661011.94
E: 2889502.27
LAT: 32.3108492
LON: 93.7666910

B.O.E. ACCESS ROAD
N: 661004.01
E: 2890436.83
LAT: 32.3108574
LON: 93.7636659

NOTES
1. SURVEY BASED UPON THE LOUISIANA STATE PLANE COORDINATE SYSTEM, NORTH ZONE (1701), NAD 1983
2. EXISTING UTILITIES ARE SHOWN IN APPROXIMATE LOCATIONS GENERATED FROM PREVIOUS MAPS AND SURVEY. CONTRACTOR SHALL VERIFY EXACT LOCATION AND ELEVATION OF ALL EXISTING UTILITIES IN AREA OF WORK PRIOR TO CONSTRUCTION AND CALL 811 AND ALL OTHER UTILITY COMPANIES AT LEAST 2 WORKING DAYS (48 HOURS) PRIOR TO CONSTRUCTION
I CERTIFY THAT THIS PLAT IS AN ACCURATE REPRESENTATION OF AN ACTUAL ON-THE-GROUND SURVEY MADE BY ME OR UNDER MY DIRECT SUPERVISION.

HERVEY FAMILY, LTD
NE/4 of Sect. 11 - T 15 N - R 14 W
File #657887



BRANDON C. CLYNCH, P.L.S. #4877 DATE: 6/29/25

REVISION 1 - 6-24-25: ADJUSTED ANNOTATION

TITLE INFORMATION PROVIDED BY: WILLIAMS

Bowman

4901 E End Blvd,
Marshall, Tx 75672
www.bowman.com
903.471.8391
TBPELS Firm No. 10120600
LAPELS Firm No. 846

LEGEND	
	PERMANENT EASEMENT
	WORKSPACE EASEMENT
	VALVE SITE EASEMENT
	EXISTING EASEMENT
	R.O.W./PROPERTY LINE
	CENTERLINE CREEK
	FENCE

TOTAL LINEAR FEET = 793.81'
TOTAL RODS = 48.11
PERMANENT EASEMENT = 0.547 ACRE
= 23,814 SQ. FT.
TEMPORARY WORKSPACE = 0.152 ACRE
= 6,630 SQ. FT.
ADD. TEMP. WORKSPACE = 1.035 ACRE
= 45,101 SQ. FT.
ACCESS ROAD = 934.70 FT. = 56.65 RODS
= 18,693 SQ.FT. = 0.429 ACRE
SURFACE SITE = 5000.00 FT. = 0.115 ACRE

MAGNOLIA MIDSTREAM GAS SERVICES, LLC.
25 WC WXE HERVEY 2-15-14
HERVEY FAMILY, LTD

DRAWN BY:	ABC	DATE:	06/18/25	AFE:	_____	SEGMENT ID:	SEGMENT ID
CHECKED BY:	CT	DATE:	06/18/25	SHEET:	1 OF 1	REVISION:	1
APPROVED BY:	BCC	DATE:	06/18/25	SHEET NAME:	381656_HERVEY		