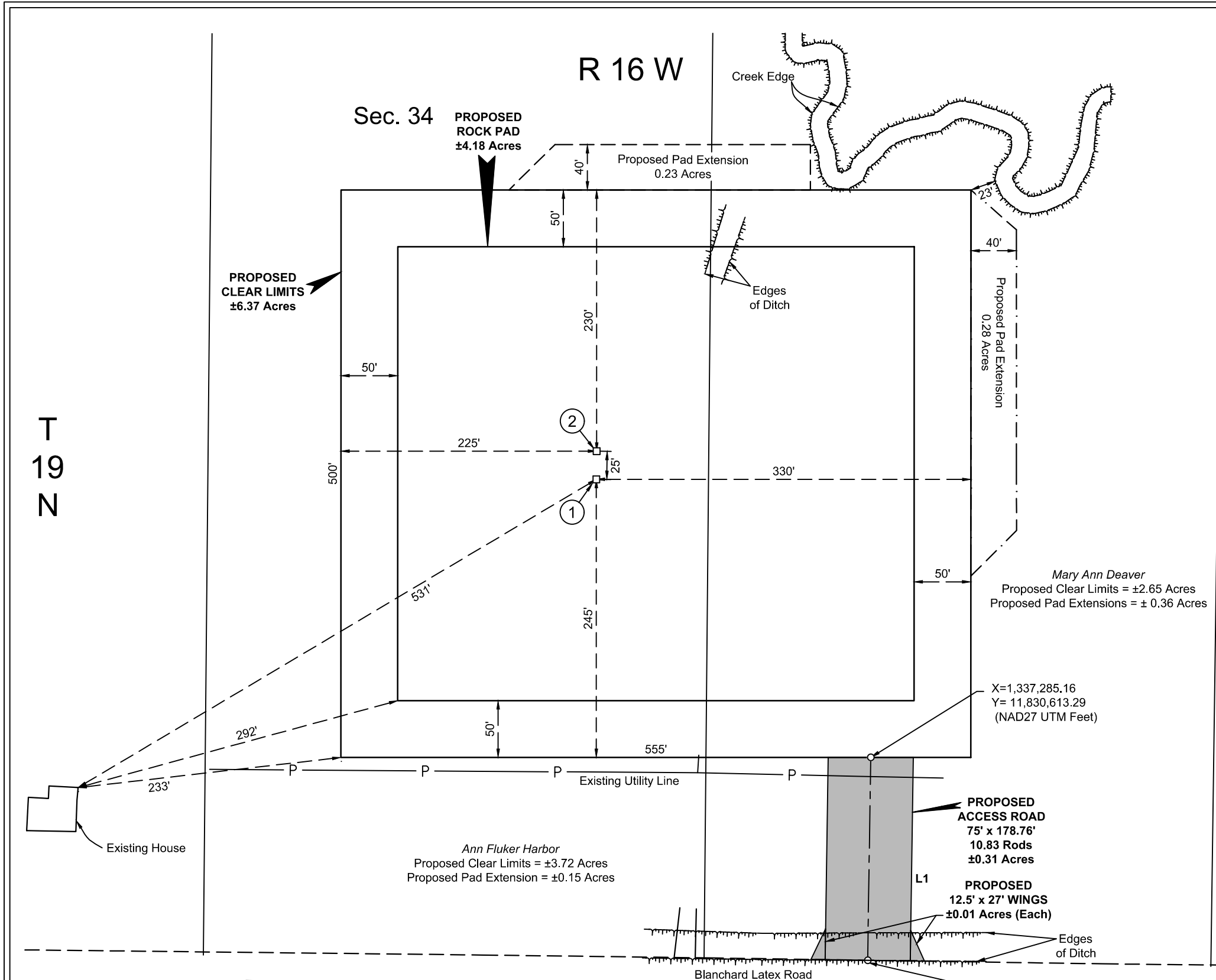
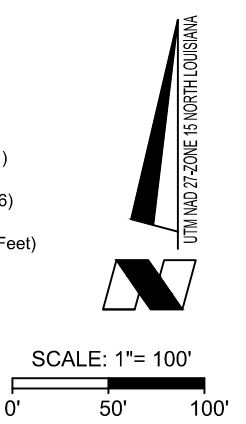


T:\2024\2247647\DWG\Matador E Pad SUP.dwg



- ① **NO. 1 WELL**  
 X = 1,542,523' (NAD27 La )  
 Y = 702,693'  
 LAT. 32.589806° N (NAD27)  
 LONG. 93.985281° W  
 X = 2,823,310' (NAD83/86 La )  
 Y = 763,403'  
 LAT. 32.589955° N (NAD83/86)  
 LONG. 93.985464° W  
 X = 1,337,043' (NAD27 UTM Feet)  
 Y = 11,830,858'  
 ELEV. +268' (NAVD88)
- ② **NO. 2 WELL**  
 X = 1,542,523' (NAD27 La )  
 Y = 702,718'  
 LAT. 32.589874° N (NAD27)  
 LONG. 93.985281° W  
 X = 2,823,311' (NAD83/86 La )  
 Y = 763,428'  
 LAT. 32.590023° N (NAD83/86)  
 LONG. 93.985464° W  
 X = 1,337,044' (NAD27 UTM Feet)  
 Y = 11,830,883'  
 ELEV. +269' (NAVD88)



- NW CLEAR LIMITS CORNER**  
 X = 1,542,299' (NAD27 La )  
 Y = 702,949'  
 LAT. 32.590501° N (NAD27)  
 LONG. 93.986019° W  
 X = 1,336,818' (NAD27 UTM Feet)  
 Y = 11,831,113'  
 ELEV. +261' (NAVD88)
- NE CLEAR LIMITS CORNER**  
 X = 1,542,854' (NAD27 La )  
 Y = 702,947'  
 LAT. 32.590515° N (NAD27)  
 LONG. 93.984217° W  
 X = 1,337,373' (NAD27 UTM Feet)  
 Y = 11,831,113'  
 ELEV. +241' (NAVD88)
- SW CLEAR LIMITS CORNER**  
 X = 1,542,296' (NAD27 La )  
 Y = 702,449'  
 LAT. 32.589127° N (NAD27)  
 LONG. 93.986005° W  
 X = 1,336,818' (NAD27 UTM Feet)  
 Y = 11,830,613'  
 ELEV. +268' (NAVD88)
- SE CLEAR LIMITS CORNER**  
 X = 1,542,852' (NAD27 La )  
 Y = 702,447'  
 LAT. 32.589141° N (NAD27)  
 LONG. 93.984202° W  
 X = 1,337,373' (NAD27 UTM Feet)  
 Y = 11,830,613'  
 ELEV. +268' (NAVD88)

**NOTE:**  
 Please be advised, that while reasonable efforts are made to locate and verify pipelines and anomalies using our standard pipeline locating equipment, it is impossible to be 100 % effective. As such, we advise using caution when performing work as there is a possibility that pipelines and other hazards, such as fiber optic cables, PVC pipelines, etc. may exist undetected on site.

**NOTE:**  
 Many states maintain information centers that establish links between those who dig (excavators) and those who own and operate underground facilities (operators). It is advisable and in most states, law, for the contractor to contact the center for assistance in locating and marking underground utilities. For guidance: Louisiana One Call - [www.laonecall.com](http://www.laonecall.com)

**DISCLAIMER:** At this time, C. H. Fenstermaker & Associates, L.L.C. has not performed nor was asked to perform any type of engineering, hydrological modeling, flood plain, or "No Rise" certification analyses, including but not limited to determining whether the project will impact flood hazards in connection with federal/FEMA, state, and/or local laws, ordinances and regulations. Accordingly, Fenstermaker makes no warranty or representation of any kind as to the foregoing issues, and persons or entities using this information shall do so at their own risk.

**FENSTERMAKER**  
 C. H. Fenstermaker & Associates, L.L.C.  
 135 Regency Sq.  
 Lafayette, LA 70508  
 Ph. 337-237-2200  
 Fax. 337-232-3299

REVISIONS	
06/19/2024 ADF	Revised pad, access & wells.
06/25/2024 TBD	Revised pad & added dimensions
07/02/2024 TBD	Revised pad & access road
07/16/2024 BLD	Revised pad ext. & added elev.
DRAWN BY: JTI	PROJ. MGR.: JLP
DATE: 05/07/2024	
JOB#: 2247647.00C	SHEET 1 OF 1

*Not to be used for construction, bidding, recordation, conveyance, sales, or engineering design.*  
**PRELIMINARY**  
 Rex R. Jones  
 Professional Land Surveyor  
 Registration No. 4873

PROPOSED ACCESS ROAD		
Line	Bearing	Distance
L1	S 00° 51' 45" W	178.76'

**SURFACE USE PLAT**  
**MATADOR E PAD**  
**TRINITY OPERATING (USG), LLC**  
 SITUATED IN  
 SECTION 34, T19N-R16W  
 CADDO PARISH, LOUISIANA