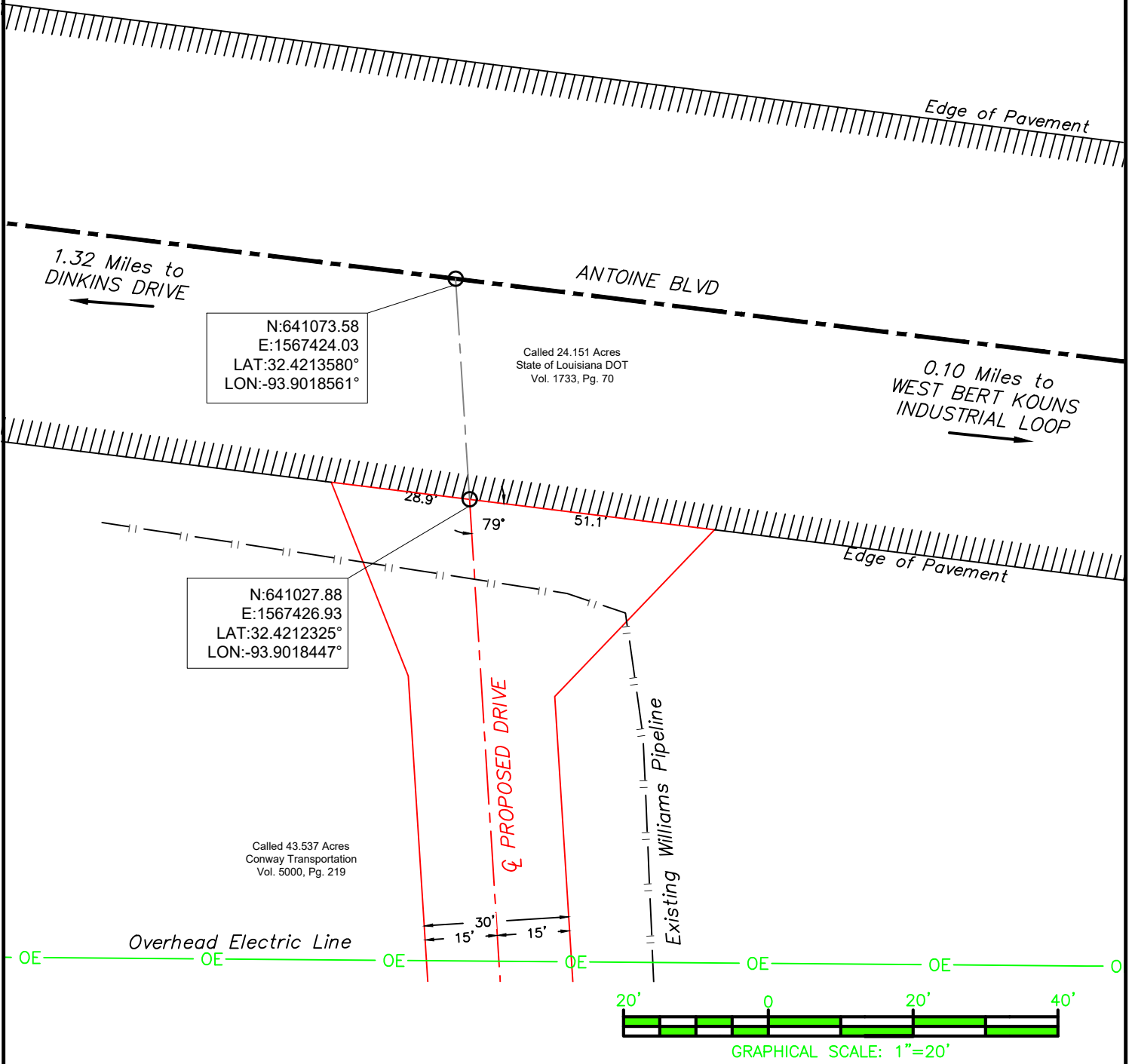
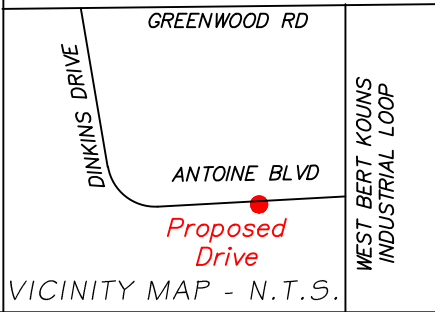
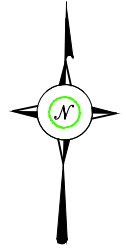


# EXHIBIT "A"

SECTION 33, T17N-R15W  
LA PRINCIPAL MERIDIAN  
NORTHWEST LAND DISTRICT  
CADDO PARISH, LOUISIANA



NOTES:  
Coordinates and Bearings are based on the State Plane Coordinate System, NAD 19273, Louisiana North Zone. Elevations are referenced to NAVD 1988

All Utilities may not be shown.

PLAT SHOWING:  
  
DRIVEWAY PERMIT  
ANTOINE BLVD  
SECTION 33, T17N-R15W  
CADDO PARISH, LOUISIANA

DRAWN	CRM	DATE	03/04/25
CHECKED	MCG	AFE #	
APP'D	MCG		
SCALE	1"=30'	SHEET	1 OF 1
REV#	DATE	DESC.	
JOB NO. 381383			



4901 E End Blvd South, Marshall, Tx 75672  
www.bowman.com  
903.471.8391  
TBPELS Firm No. 10120600

DRAWING NO. ANTOINE_BLV_Driveway_PERMIT	PREPARED FOR: PALOMA NATURAL GAS	REV.
--	-------------------------------------	------