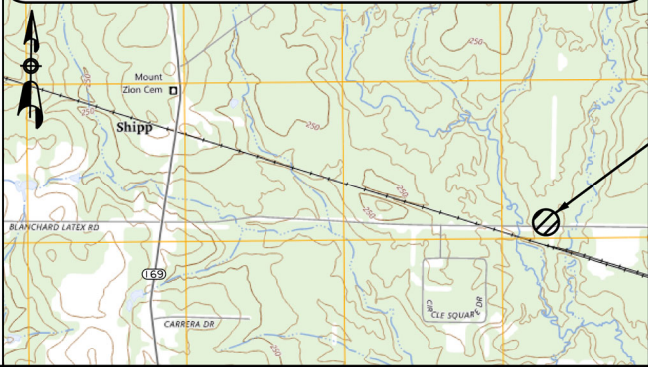


Topography obtained from U.S. Geological Survey Quadrangle "Blanchard, LA"

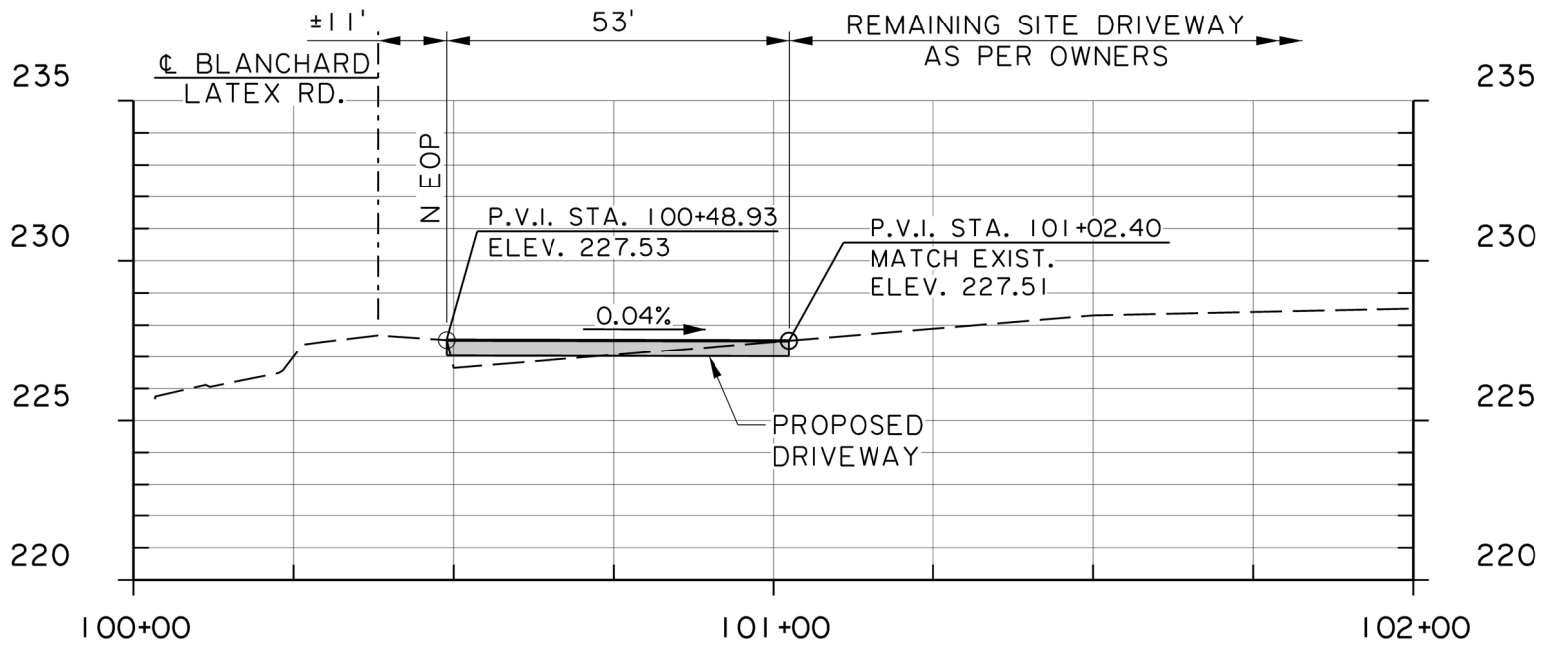


PROPOSED DRIVEWAY
 LAT: 32.5885°N
 LONG: 93.5598°W

VICINITY MAP
 SCALE: 1" = 4,000'

NOTES:

1. PAVEMENT SECTION SHOWN HEREIN IS ASSUMED AND SHALL BE APPROVED BY OWNER. PAVEMENT DESIGN NOT INCLUDED AS PART OF THIS PERMIT DRAWING.
2. THE 2016 EDITION OF "LOUISIANA STANDARD SPECIFICATIONS FOR ROADS AND BRIDGES", ALONG WITH THE LATEST DOTD SUPPLEMENTAL SPECIFICATIONS, SHALL GOVERN ON THIS PROJECT WITHIN THE DOTD RIGHT OF WAY.
3. PROPOSED DRIVEWAY IS AT A HIGHPOINT IN THE ROAD AND ACTS AS A DRY RAMP.
4. COORDINATE SYSTEM: US STATE PLANE 1983
 ZONE: LOUISIANA NORTH 1701
 HORIZONTAL DATUM: NAD83 (2011)
 VERTICAL DATUM: NAVD88



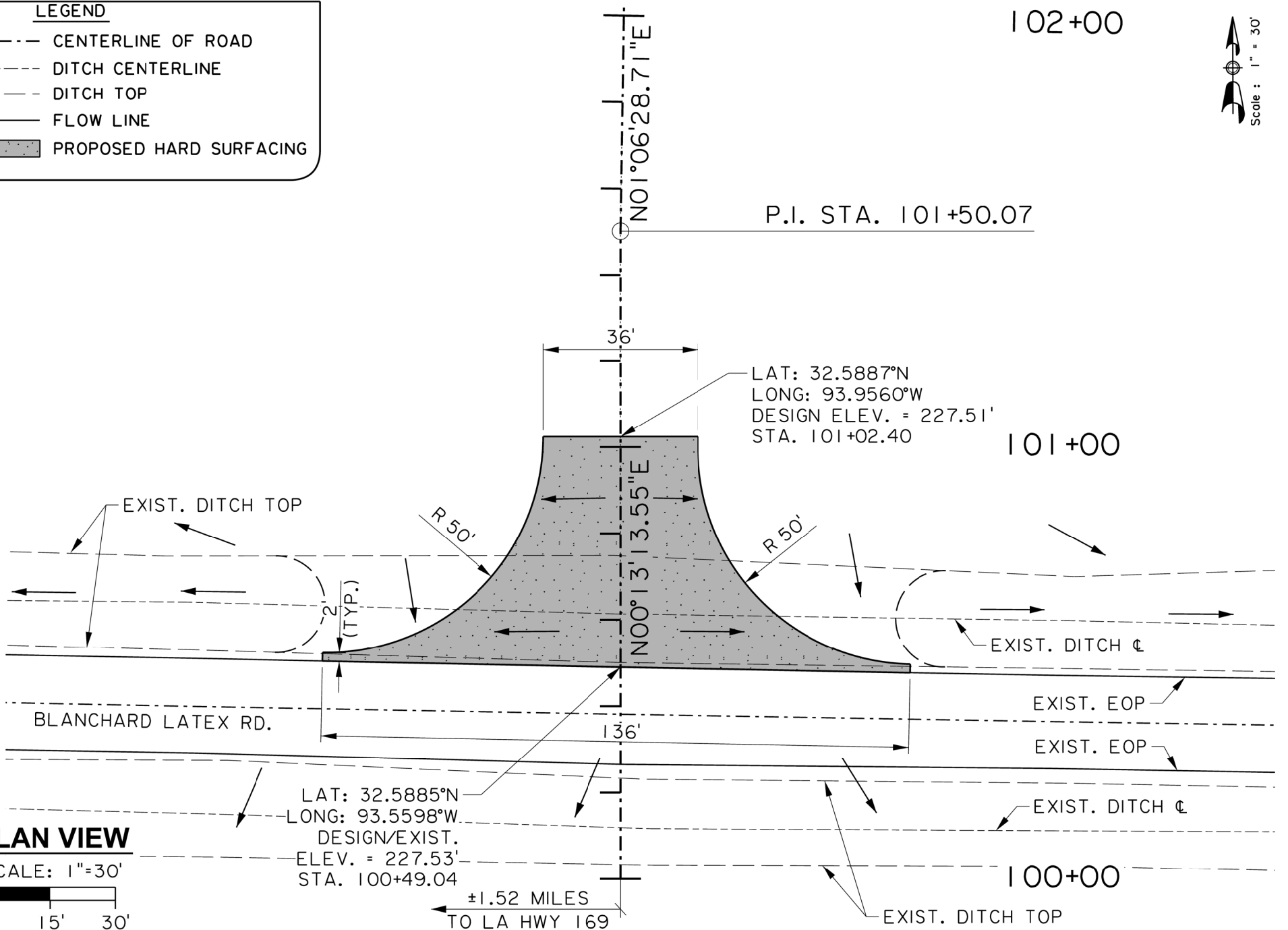
NOTE:
 PROPOSED DRIVEWAY IS ASSUMED TO BE 6" PORTLAND CEMENT CONCRETE WITH 6" LIMESTONE BASE COURSE OR 3" ASPHALT CONCRETE WITH 12" LIMESTONE BASE COURSE.

PROFILE VIEW

HORIZONTAL SCALE: 1"=20'
 VERTICAL SCALE: 1"=4'

LEGEND

- CENTERLINE OF ROAD
- DITCH CENTERLINE
- DITCH TOP
- ← FLOW LINE
- █ PROPOSED HARD SURFACING



PLAN VIEW

SCALE: 1"=30'
 0' 15' 30'

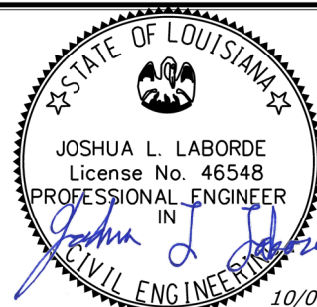


C. H. Fenstermaker & Associates, L.L.C.
 135 Regency Square • Lafayette, La. 70508
 Phone: (337) 237-2200

DESIGN: JLL DATE: 10/09/2024
 DETAIL: CJH JOB #: 2236050.00C
 CHECK: JLL

PROPOSED DRIVEWAY TO ACCESS "SHARP B PAD DRIVEWAY" TRINITY OPERATING (USG), LLC

SITUATED IN SECTION 36, T19N- R16W CADDO PARISH, LOUISIANA



REVISION OR CHANGE ORDER DESCRIPTION	
DATE	REVISION DESCRIPTION