

NEXTLINK INTERNET

Bossier & Caddo Parish Connectivity Update

Northwest Louisiana Progress Report: Bossier & Caddo Parishes

Prepared for Bossier & Caddo Parish Stakeholders

May 2026

Bossier Parish Representatives

District 1

[Mr. Lynn Beaty](#)

District 2

[Mr. Glenn Benton](#)

District 3

[Mr. Philip Rodgers](#)

District 4

[Mr. John Ed Jorden](#)

District 5

[Mrs. Julianna Parks](#)

District 6

[Mr. Chris Marsiglia](#)

District 7

[Mr. Jimmy Cochran](#)

District 8

[Mr. Doug Rimmer](#)

District 9

[Ms. Pam Glorioso](#)

District 10

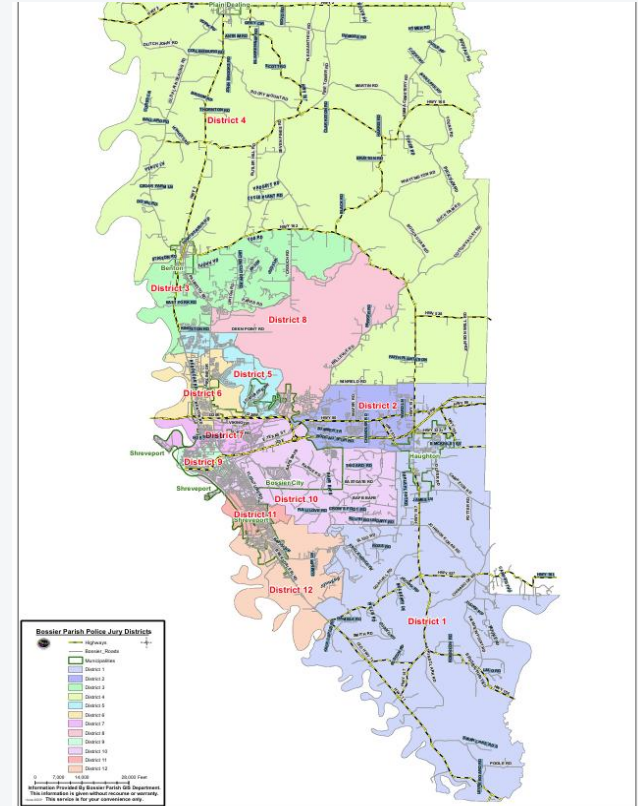
[Mr. Julian Darby](#)

District 11

[Mr. Tom Salzer](#)

District 12

[Mr. Keith Sutton](#)



What's Happening in Northwest Louisiana



First BEAD-Funded Tower in the U.S. is Live

On May 1, 2026, Nextlink activated the nation's first BEAD-funded tower in southern Bienville Parish, delivering gigabit-speed service to 104 locations in Bossier Parish.



\$18.5M BEAD Subgrant via GUMBO 2.0

Nextlink's Louisiana subgrant will deliver gigabit-class fixed wireless to 7,460 unserved and underserved locations statewide, including 1,764 in Bossier and Caddo Parishes.



Louisiana Leads the Nation in BEAD Milestones

First state to receive NTIA approval, sign subgrant agreements, disburse BEAD dollars, clear NEPA approvals, and activate a live BEAD-funded tower—all within six months.



Nextlink Active Coverage — Northwest Louisiana

Nextlink in Northwest Louisiana

1

Active Broadband Expansion

Nextlink Internet is actively expanding high-speed broadband across Northwest Louisiana using a combination of fixed wireless and fiber-to-the-home technology, delivering speeds up to 1 Gbps.

2

GUMBO Phase 1 Complete, BEAD Deployment Underway

Having completed all GUMBO Phase 1 obligations statewide, Nextlink activated its first BEAD-funded tower on May 1, 2026, and is now scaling deployment across 1,764 awarded locations in Bossier and Caddo Parishes.

3

Hybrid Broadband Strategy

Nextlink's approach combines fixed wireless for rapid coverage and fiber-to-the-home for long-term capacity, ensuring both speed-to-market and infrastructure durability.

4

Collaborative Partnerships

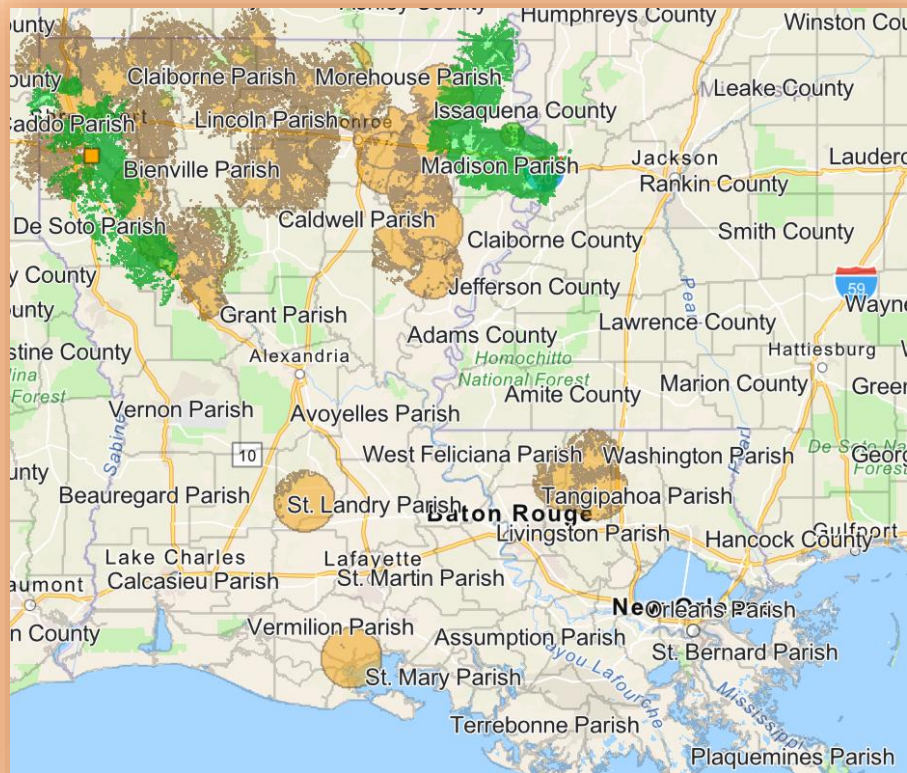
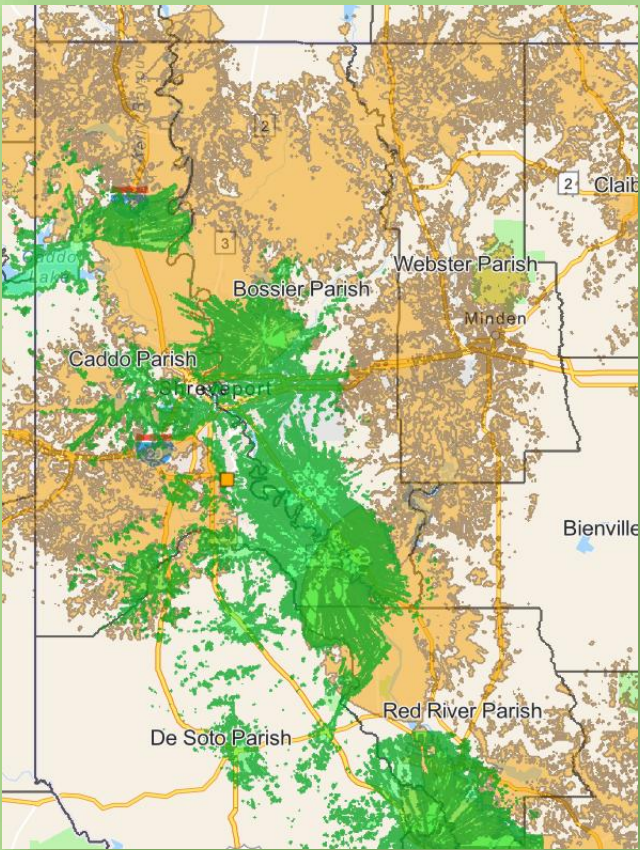
Working closely with ConnectLA, parish governments, and local stakeholders to align deployment with community needs and maximize the impact of federal broadband investment.

5

Expanding Beyond Obligated Locations

Nextlink is committed to serving not only the federally awarded locations but also extending coverage to nearby unserved and underserved areas as infrastructure is built out.

Nextlink Active Coverage Areas for Louisiana



BEAD GUMBO 2.0 Awarded Locations



**Awarded through ConnectLA's GUMBO 2.0 program, backed by the federal BEAD program.
Total statewide subgrant: \$18.5 million | 7,460 locations across Louisiana*

Bossier Parish

Total awarded locations: 862
857 Broadband Serviceable Locations (BSL) + 5
Community Anchor Institutions (CAI)

Caddo Parish

Total awarded locations: 902
884 Broadband Serviceable Locations (BSL) + 18
Community Anchor Institutions (CAI)

Combined Total

1,764 total awarded locations
1,741 BSL + 23 CAI across both parishes. Part of
Nextlink's \$18.5M GUMBO 2.0 subgrant.

BEAD Award Locations Map

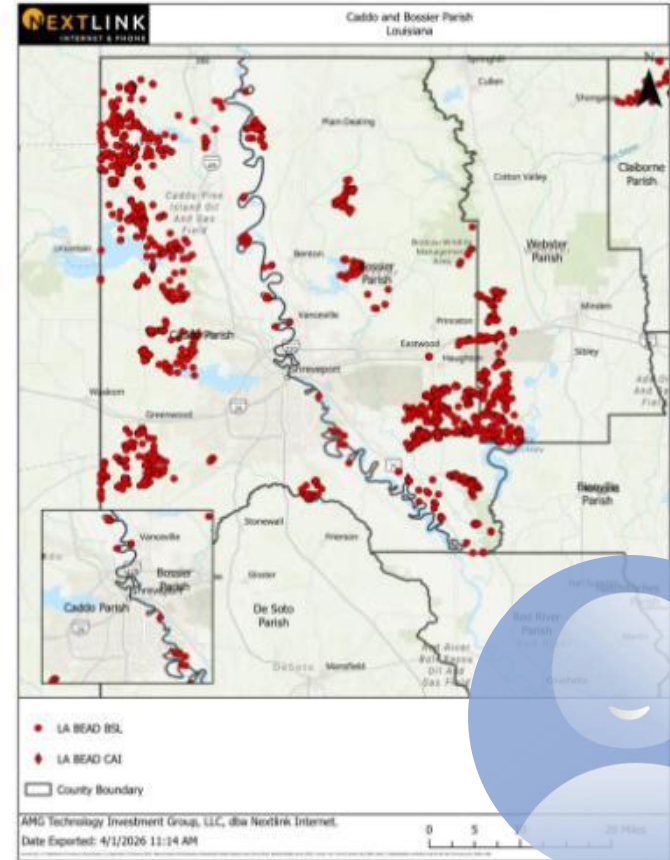
1,764 Awarded BEAD Locations

Each red dot represents a BEAD-awarded broadband serviceable location (BSL) or community anchor institution (CAI) across Caddo and Bossier Parishes.

Bossier Parish: 857 BSL + 5 CAI = 862 locations

Caddo Parish: 884 BSL + 18 CAI = 902 locations

These locations were awarded through ConnectLA's GUMBO 2.0 program as part of Nextlink's \$18.5 million statewide BEAD subgrant covering 7,460 locations across Louisiana.



*Source: AMG Technology Investment Group, LLC, dba Nextlink Internet. Data exported 4/1/2026.

Nextlink Active and Pending Coverage Areas



Education & Remote Work

Students, educators, and remote workers across Bossier and Caddo Parishes depend on reliable broadband to access online learning and work-from-home opportunities.

Economic Development

Reliable broadband enables Bossier and Caddo Parishes to attract new businesses, support local entrepreneurs, and compete for jobs in the modern digital economy.

Healthcare Access

High-speed internet expands access to telehealth, remote monitoring, and timely care—helping residents in rural and underserved areas receive quality healthcare closer to home.

**Coverage areas based on Nextlink's GUMBO 2.0 BEAD subgrant awarded by ConnectLA.*

Our Approach: Hybrid Broadband



Fixed Wireless

Rapid deployment using tower infrastructure delivering gigabit speeds. First BEAD tower activated May 1, 2026 in Bossier Parish.



Fiber Expansion

Long-term fiber buildout options to deliver gigabit-capable connections for lasting infrastructure investment.



Community Partnership

Working with parish leaders and ConnectLA to prioritize unserved areas across Bossier and Caddo Parishes.

Nextlink's hybrid model balances speed of deployment with long-term infrastructure quality, powered by Tarana ngFWA Gen 2 technology on 3.5 GHz CBRS spectrum.

What Our Customers Are Saying

Interviews conducted with current Nextlink customers in Northwest Louisiana

“I live in a rural part of Bossier Parish, and Nextlink has been more reliable than I expected—even during storms, when other services around us go down.”

— Bossier Parish Resident

“I work remotely, so dependable internet is essential. With Nextlink, I have the speed and reliability I need to do my job without lagging or buffering.”

— Remote Worker, Northwest Louisiana

“We felt lucky to find Nextlink. The installation was thorough, everything was clearly explained, and the service has been seamless from the start.”

— New Nextlink Customer

Interviews conducted with current Nextlink Internet customers in Northwest Louisiana for internal and external stakeholder sharing.

How the Parish Can Help

1

Support Resident Awareness & Enrollment

Help spread the word that gigabit broadband is coming to Bossier and Caddo Parishes. Share Nextlink's service availability with residents in newly covered areas so they can sign up.

2

Facilitate Tower Siting & Right-of-Way Access

Help expedite permitting and access to parish-owned land or structures for tower and equipment placement to accelerate deployment timelines.

3

Designate a Parish Broadband Liaison

Appoint a point of contact for ongoing coordination between Nextlink and parish leadership as deployment scales across 1,764 awarded locations.

Our immediate focus: build on Louisiana's national momentum by deploying rapidly across Bossier and Caddo Parishes.

Recommended Discussion Topics

1

Permitting, Utility Access & Infrastructure Siting

Coordination opportunities with parish and municipal leadership regarding permitting, utility access, and infrastructure siting.

2

Community Priorities for Underserved Areas

Community priorities for underserved areas lacking reliable broadband access across Bossier and Caddo Parishes.

3

Digital Inclusion & Economic Development

Potential partnerships supporting digital inclusion, economic development, workforce readiness, and educational access.

4

Public Safety & Emergency Communications

Public safety and emergency communications benefits associated with expanded broadband infrastructure.

5

Continued Collaboration as Deployment Advances

Opportunities for continued collaboration as BEAD and GUMBO 2.0 deployment activity advances throughout Northwest Louisiana.

Recommended topics for coordination between Nextlink and Bossier & Caddo Parish leadership.

Our Commitment to Louisiana

Nextlink remains committed to partnering with Louisiana communities to ensure rural residents and businesses have access to reliable, affordable, high-quality broadband service.

The company looks forward to continued collaboration with Caddo and Bossier Parish leadership as infrastructure investment expands across Northwest Louisiana.

Let's Connect



Ebony E. Cooksey

Market Development Manager &
Government Affairs Coordinator

855-698-5465 | 214-417-0389

nextlinkinternet.com