



## ⚠ Orphine Analogue Detected

### 🔍 What is an orphine?

Orphines are a new subclass of synthetic opioids. Brorphine was the first orphine to appear in European markets around 2019 and showed up in the U.S. by 2020. Its potency rivals or slightly undercuts fentanyl.

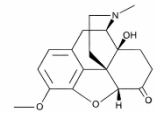
### 🔬 What are the case details?

An item was received from the Caddo Parish Sheriff's Office containing four M/30 tablets. These tablets were suspected to be oxycodone, but laboratory analysis confirmed the presence of N-Propionitrile chlorphine, which is an orphine analogue.

### ❓ What should law enforcement know?

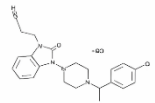
For officers conducting impaired driving investigations, the orphines will present like any other narcotic analgesic case. Watch for the classic opioid toxidrome: central nervous system depression manifesting as lethargy or stupor, respiratory depression with slow and shallow breathing, and pinpoint pupils. These signs fall squarely within the DRE Narcotic Analgesic category. Narcan is effective for an individual suffering from orphine toxicity.

REAL



Oxycodone

FAKE



N-Propionitrile Chlorphine

### DISTRIBUTION OF CONFIRMED CASES



The map to the left shows the distribution of confirmed orphine cases in the U.S. as of January 2026. However, this is likely an underestimation of actual cases since laboratories just recently began testing for orphines. Data mining identified over 200 presumptive positive cases for orphine analogs between 2004 and 2005, with Illinois and Tennessee showing the highest numbers.

Krotulski AJ, Papsun DM, Stang BN, Walton SE, Logan BK. (2026) Increase in Fatal Overdoses Linked to Novel Synthetic Opioid N-Propionitrile Chlorphine (Cychlorphine), Center for Forensic Science Research and Education, United States.

